



Custodial Institutions Agency
Ministry of Justice and Security

This is **DJI** the Custodial Institutions Agency

In facts and figures

At the Custodial Institutions Agency (DJI)...



...we carry out around **1,600** cell inspections every year to detect prohibited items, such as drugs, weapons or telephones



...we **work together with suppliers** on corporate social responsibility

...the average length of stay in prison is more than **4** months



...sniffer dogs carry out approximately **875** checks every year



...in 2022, **642** MBO practical statements and **1,715** certificates were issued to detainees via the In-Made Practical School

...we clean approximately **350,000** m² of floor space



...detainees work in **29** In-Made occupational and employment workshops

...we use **virtual reality** for some training or treatments



Where freedom
ends and may
be regained.

Table of contents

The DJI custodial institutions	6
How long are people detained?	8
We do it together	12
What are the costs of a day in detention?	14
Who work at DJI?	16
How is the organisation structured?	18
Prison administration	20
Immigration detention	22
Forensic care	24
Correctional institutions for juvenile offenders	26
Caribbean Netherlands	28
The Transport and Support Service	30
Spiritual Care Service	32
Forensic psychiatry and psychology	34
Care	36
Shared Service Center DJI	38

The DJI custodial institutions

DJI has approximately **50** locations including 1 location in the Caribbean Netherlands.



A cell in a prison or remand centre must be at least 5 x 2 m and is 2.5 m high.

Correctional institutions for juvenile offenders, forensic psychiatric centres and detention centres have **rooms** instead of cells.



DJI has various different types of institutions:

- **Remand centre** for adults held in pre-trial detention because they are suspected of a crime.
- **Prison** for adults convicted by a court of an offence.
- **Correctional institution for juvenile offenders/ small-scale custodial youth facility** for young people held in pre-trial detention or who have been sentenced to a punishment or measure.
- **Forensic psychiatric centre** for convicted adults who require forensic psychiatric treatment.
- **Centre for transcultural psychiatry** for patients with complex psychiatric disorders and a different cultural background.
- **Detention centre** for foreign nationals living illegally in the Netherlands or who have been refused access at the border and are awaiting deportation to their country of origin.

How long are people detained?



The average length of stay in prison is more than **4** months



10% of detainees are in prison for more than 1 year

At the end of 2022, **61** detainees were serving life sentences, **45** of whom under an irrevocable custodial sentence



On average, juvenile offenders stay for **3** months



The duration of forensic psychiatric treatment is more than **9** years



On average, foreign nationals stay at DJI for **30** days, families for **9** days

Did you know....

... DJI's institutions are a mini-society in its own? In addition to security guards, we see nurses, social workers, IT specialists, imams, etc.



... that the DJI Training Institute provides approximately 32,000 training courses every year? From dealing with aggression and violence to radicalisation and from communication skills to law and regulations?



... that if we classify detainees by crime, the largest group has been convicted of a violent crime?



... that detainees are increasingly cooking their own meals under supervision? Tasty, healthy and less food waste.

... that all young people in a correctional institution for juvenile offenders follow compulsory education at an appropriate level?



... that every institution has a quiet centre where people of all religions can express their philosophical beliefs?

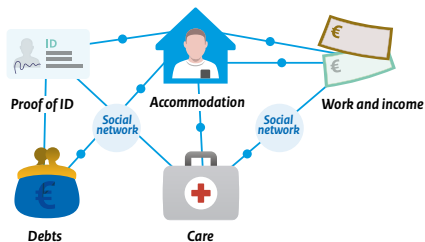


We do it together

DJI works with other organisations to create a safe society.



For example, we work together with healthcare providers, probation organisations, volunteer organisations, the Public Prosecution Service, the judiciary, police, municipalities and the immigration chain.



Did you know...

... that punishments and measures at DJI go together with treatment, care, reintegration, education and recovery?

... that from day one, we work with the detainees on their return to society?

... that DJI works together with its partners to ensure that someone does not go down the wrong path again?

... that this works best if the following matters are in order: proof of ID, accommodation, work and income, debt management, care and a network of family and friends?

What are the costs of a day in detention?

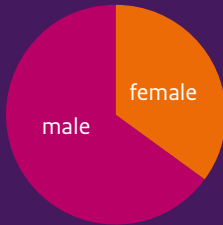
DJI's total budget (2023) is more than **2.9 billion** euros



Who work at DJI?

DJI has a staff of approximately **16,000 FTEs**

The average years of service of DJI staff is **12.9 years**



Of the number of employees, **37%** are women and **63%** are men



More than **9,000** people in security and remand

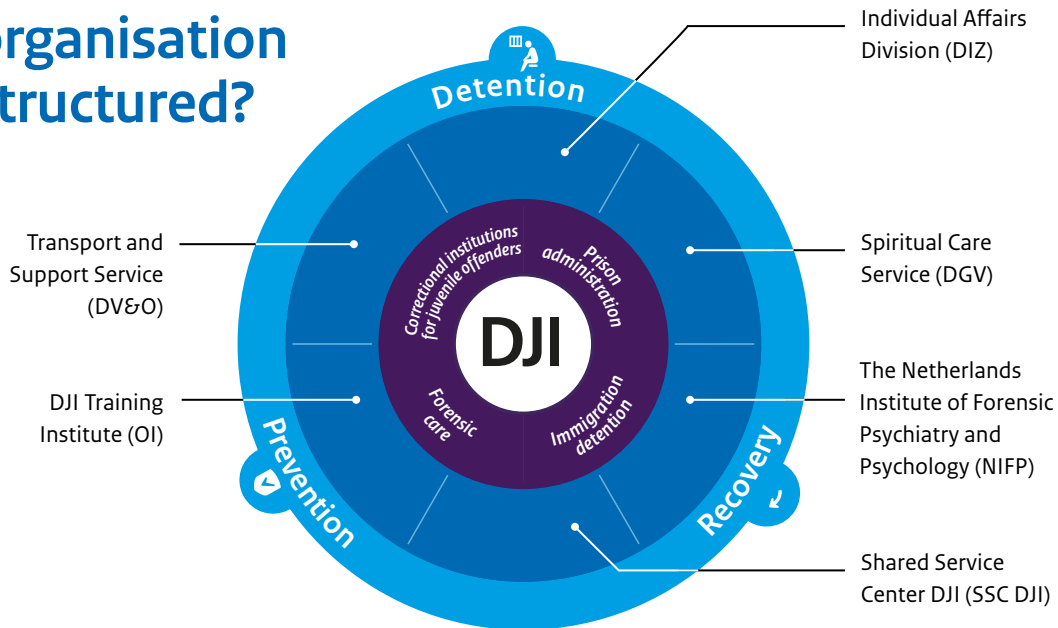


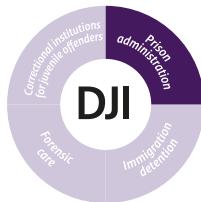
Nearly **400** healthcare workers



Nearly **3,000** people in the office

How is the organisation structured?





Prison administration



An average of **8,600** detainees stay at **29** locations every day

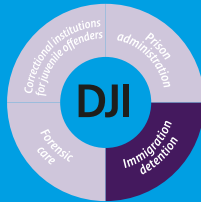


Who are the detainees?

- adults awaiting judgment
- convicted adults



There are different facilities in terms of **care and security level** for different target groups. For people who need more care, there is, for example, a Penitentiary Psychiatric Centre (PPC) or the Extra Care Facility (EZV). For people who need more security, there is, for example, an Intensive Supervision Unit (AIT) or the Maximum Security Facility (EBI).



Immigration detention

On average, there are **219** foreign nationals in detention on any single day

Who are the detainees?

- foreign nationals refused entry at the border
- illegal foreign nationals



Immigration detention ensures the foreign national is available for return to the country of origin

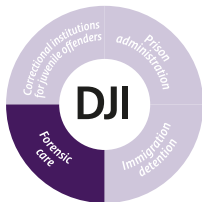


There are different facilities for different target groups. One is the **Enclosed Family Facility (GGV)**. This is a special place to stay with homes for families with underage children. The location is child-friendly. For **unaccompanied underage foreign nationals (AMV)**, we have a separate facility.

Underage foreign nationals in immigration detention can receive education.



Forensic care



Approximately **20,000** patients get forensic care every year. More than **1,500** of them are placed under hospital orders and receive forensic psychiatric treatment (tbs).

The judge can impose forensic psychiatric treatment. This is a combination of punishment and treatment. The best-known form of forensic care is forensic psychiatric treatment, which is carried out in a forensic psychiatric treatment clinic. Forensic care can also take place on an outpatient basis. DJI purchases this care from an institution. The patient lives at home, but receives care in the institution.

For example, patients receive treatment for:



Addiction

Personality disorders



Psychotic disorders

Correctional institutions for juvenile offenders



On average **475** juveniles stay at **11** locations every day



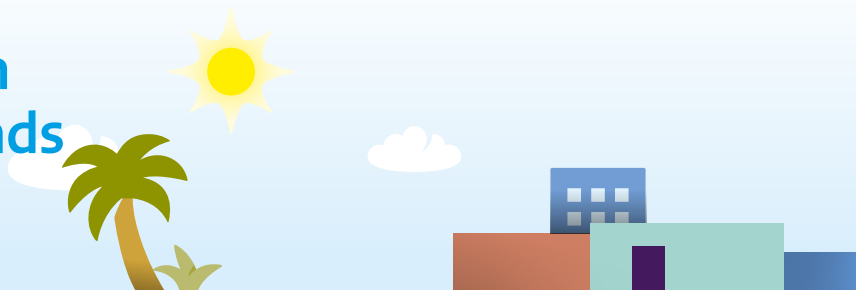
Who are the detainees?

- juveniles awaiting judgment
- juveniles sentenced to juvenile detention
- juveniles who have been imposed a placement in a correctional institution (PIJ-maatregel) for juvenile offenders



There are different facilities for different target groups. For example, there is the **Individual Programme Unit (ITA)**: for young people who cannot stay in a group, or the unit for juveniles with **severe sexual problems (ESP)**.

Caribbean Netherlands



Bonaire houses the custodial institution Caribisch Nederland (JICN). It can accommodate **113** detainees from the islands of Bonaire, St. Eustatius and Saba. There are **10** places for people under arrest.

Who are the detainees?



- People awaiting judgment and convicts
- Foreigners and detainees who require extra care

Did you know that this is the only custodial institution in the Caribbean Netherlands?

Transport and Support Service (DV&O)...

...provides, among other things, the transport of people to or from a court or institution



...has **170** prison vans for this



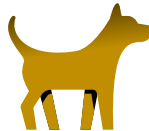
...handles approximately **143,000** transport requests per year



...covers approximately **7.7** million kilometres every year

In addition DV&O also provides:

- support for the national special assistance unit
- security of correctional institutions
- transport involving an external threat (for example an attempt at liberation or liquidation)
- the connection of approximately **2,200** ankle monitors per year
- checks with tracker and telephone dogs



Spiritual Care Service...

... covers **8** religions and spiritual movements



... provide spiritual care in our institutions.
This is done by approximately **167** spiritual counsellors

There are preachers, pastors, imams, buddhists, rabbis and humanists employed by DJI. Each year, they provide:



6,100 religious ceremonies, prayer services and reflection meetings



7,600 group conversations



36,000 individual conversations



Forensic psychiatry and psychology

The Netherlands Institute for Forensic Psychiatry and Psychology (NIFP) is a centre of expertise in the area of mental and somatic care. This institute is also known from the Pieter Baan Centre, where suspects of serious crimes are examined.



The NIFP...

- conducts the psychological assessment of suspects at the request of the courts. This is referred to as a behavioural expert's report



- advises where a patient can best receive treatment



- is involved in scientific research



Did you know...

...that the NIFP issues more than **8,000** behavioural expert opinions every year?

...that there are approximately **460** reporters affiliated with the NIFP as self-employed persons? These are mainly psychologists and psychiatrists

Care

The people who stay at DJI are entitled to healthcare. They receive this care in the correctional institution. People who need care 24 hours a day go to the Judicial Centre for Somatic Care (JCvSZ) in Scheveningen, for example, for post-operative care. For emergency or medical specialist care, detainees go to a regular hospital, of course with security.

DJI has:

50 medical services across various correctional facilities



40 beds in the JCvSZ

3 dental buses for mobile oral care



Shared Service Center DJI (SSC DJI)...

...supports the entire organisation in the areas of
finance, procurement and personnel management

Did you know that the SSC...

... handles **386,000** customer contacts per
year, via email, telephone, post and Intranet?

...has contracts with around **800** different
suppliers?

...conducts around **3,000** preliminary
psychological examinations on applicants
per year?

Colophon

This is a publication of the Custodial Institutions
Agency. No rights can be derived from this.

To respond or submit orders:
communicatie@dji.minjus.nl

The most recently available data has been
used for this publication.

© DJI July 2023

There is more to working at DJI

DJI is always looking for new colleagues.

Discover our work and your options at

www.werkenbijdji.nl



Custodial Institutions Agency

Where freedom ends
and may be regained