



Custodial Institutions Agency
Ministry of Justice and Security

This is
**the Custodial
Institutions
Agency (DJI)**
In facts and figures

In 2019, the Custodial Institutions Agency (DJI) in the Netherlands



daily distributed more than **80.000** sandwiches within our institutions,



a distance of **11.000.000** km was covered for transport and support



and an average cell still measured **5x2x2,5** (lxbxh) in size;

bedding for **11.500** had to be laundered

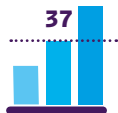


and the total DJI staff was made up of **35% women** and **65% men**;



the average stay for an adult inmate was **109** days,

the average age of that adult inmate was **37**



and the average cost of 1 prison place was € **265** per day.

The average period of detention for a person with a hospital order is around **7,5** years.



The following 36 pages feature facts and figures about DJI.



Table of contents

What locations does DJI have?	6
Who are the inmates?	8
Where do the inmates come from?	10
How long are they detained?	12
Who works at DJI?	14
What does a day in detention cost?	16
How is the organisation structured?	18
Prison administration	20
Correctional institutions for juvenile offenders	22
Forensic care	24
Immigration detention	26
Caribbean Netherlands	28
Transport and support	30
Spiritual care	32
Forensic psychiatry and psychology	34
Care	36
Other services	38



What locations does DJI have?

DJI has **50** locations.



A cell in a prison or remand centre must be at least **5 x 2 m** and is **2.5 m high**.

Correctional institutions for juvenile offenders, forensic psychiatric centres and detention centres for foreign nationals have

rooms instead of cells.



DJI has various different types of institutions for different categories of inmates and patients

Remand centre for adults held in pre-trial detention or serving short-term sentences;

Prison for adults convicted of an offence;

Correctional institution for juvenile offenders for young people convicted of an offence, between 12 and 18 years of age, up to a maximum of 23;

Forensic psychiatric centre for adults who have been convicted who require psychiatric care (patients);

Centre for transcultural psychiatry for patients with complex psychiatric disorders;

Detention centre for foreign nationals living illegally in the Netherlands or refused access at the border and for drugs couriers.

Who are the inmates?

We call them “**detainees**”.



- Adults awaiting a judgement
- Adults who have been convicted



- Juveniles awaiting a judgement
- Juveniles who have been convicted



- Adults who need psychiatric treatment or care



- Illegal foreign nationals or foreign nationals refused entry at the border
- Collectively

Every year, **37.000** new detainees are admitted

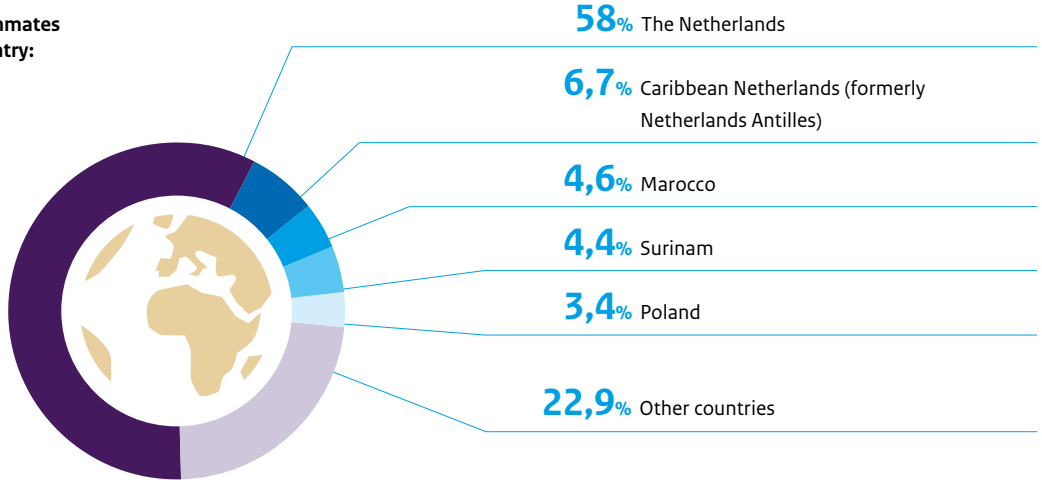
On average, there are **11.335** in detention on any single day



Of these, **95%** men and **5%** women

Where do the inmates come from?

Adult inmates by country:





How long are they detained?



Adult inmates are detained for an average of **109** days

54% are free again within **1** month

39% stay between **1** and **12** months

7% stay longer than **1** year

39 are serving life sentences



On average, juvenile offenders stay for **3** months



Patients stay for an average of **7,5** years



On average, foreign nationals stay for **6** weeks



Who works at DJI?

DJI has a staff of **14.401** FTE

35% women and **65%** men

Age breakdown

3,6% are **24** or younger

15,7% are between **25** and **34**

52% are between **35** and **54**

28,7% are **55** or older



Average years of service: **14,2 years**



What does a day in detention cost?

Average cost per day per place:

In 2019, the total DJI budget was € **2 billion** euros.



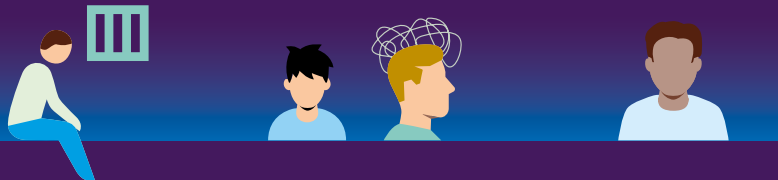
* for example a psychiatric hospital



How is the organisation structured?

The Custodial Institutions Agency consists of three divisions and a number of national services. The head office is located in The Hague.

Divisions



Prison administration/
Immigration detention

Forensic care/Correctional
institutions for juvenile
offenders

National services

- Transport and Support Service (DV&O)
- Spiritual Care Service (DGV)
- The Netherlands Institute of Forensic Psychiatry and Psychology (NIFP)
- Shared Service Centres for IT, finances, procurement, personnel management and advice
- DJI Training Institute

The head office forms a link between the ministry and the rest of the organisation.

The main directorate is supported by a number of central directorates.

Prison administration



Every day, the prison administration cares for



9.114 inmates in **29** locations.

Inmates are detained for various reasons including

- preventive custody
- custodial sentences
- custodial measures
- custodial sentences for unpaid fines



Correctional institutions for juvenile offenders

450 young people are daily detained in the correctional institutions for juvenile offenders, who receive support from staff during their stay.



They are detained in

1 central government institution (three locations, part of the Ministry of Justice and Security) and

4 private institutions (subsidised by DJJ, but under their own management).



Average period in detention

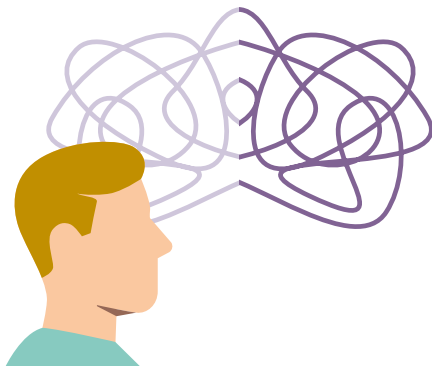
Preventive custody **47** days

Juvenile detention **60** days

Placement in a Correctional Institution for Juvenile Offenders (PIJ)

1.174 days

Forensic care



Forensic care within the context of criminal law covers all mental healthcare and care for mentally-handicapped adult subject to criminal court orders, in addition to 1,309 people placed under hospital orders (TBS). This therefore also involves the procurement of care for inmates in special care places (in the prison system) who need care outside the prison.

The treatments take place in

- 2** central government institutions (part of the Ministry of Justice and Security)
- 9** private institutions (subsidised by DJI, but under their own management)
- 4** penitentiary psychiatric centres
- 190** care institutions where treatment hours and places are purchased (such as healthcare institutions).



The average period of detention for a person with a hospital order is around **7,5** years.



20.500 patients get other forensic care every year.



Immigration detention



417 foreign nationals are detained in the detention centres.

They are detained on the grounds of measures under administrative law because they have been refused entry at the border (Section 6 of the Aliens Act) or because they are living in the Netherlands illegally (Section 59 of the Aliens Act).

Foreign nationals are detained in:



1 detention centre (for foreign nationals being prepared for removal)

The average period of detention is **6** weeks



The average period of detention for families is almost **1** week in the Closed Family Facility (GGV)



Unaccompanied minor foreign nationals (AMV) **2** weeks



Caribbean Netherlands



There in November **2018**, the JICN has been officially opened.

Since October 2010, the Netherlands has been fully responsible for detainees in the Caribbean Netherlands. This includes the island of Bonaire, St. Eustatius and Saba. Bonaire has the custodial institution Caribisch Nederland (JICN).



It is the only custodial institution on the island.

There are **113** places for different groups: preventives, punished people, juveniles, foreign nationals and detainees with extra care. There are **10** places for persons under arrest.

Transport and support

Transport and support takes care of the transport of persons under arrest, inmates and/or foreign nationals, for example to and from the courts, and the transport of goods and penal records for the entire justice system.



In doing this it uses **170** prison vans

handles **235.000** transport requests per year



and covers **11** million km every year.

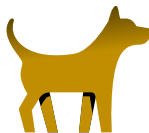


In addition, it also provides support for the national special assistance team, the internal special assistance team, complex security and provides care for people under police arrest.

It also includes **714** ankle monitors.



The tracker dogs of this service also perform **873** controls.



Spiritual care

167 spiritual counsellors provide spiritual care to the inmates, patients and other detainees within the various institutions.

Spiritual care covers seven religions and spiritual movements:

Roman Catholic, protestant, jewish, islamic, buddhist, hindu, humanist and orthodox.



Number of religious services

6.100 religious ceremonies



7.600 group conversations



36.000 individual conversations

Forensic psychiatry and psychology

The Netherlands Institute for Forensic Psychiatry and Psychology (NIFP) is a centre of expertise in the area of mental and somatic care. This institute covers the entire country and is also known as the Pieter Baan Centre.

The NIFP

Coordinates and conducts the psychological assessment of suspects at the request of the courts.



Provides psychological care in prison.

Advises on where patients can best be treated.



Is involved in scientific research and trains forensic reporters.

Care

Detainees are entitled to health care. The medical service provides this care in the institutions.

For intensive care detainees can go to the Judicial Centre for Somatic Care (Justitieel Centrum voor Somatische Zorg (JCvSZ)), such as post-operative care. For medical specialist care, regular hospitals are used.

DJI has:

50 medical services

40 beds at the JCvSZ

3 dental buses



Other services

In order successfully to achieve the DJI objectives, DJI is supported in its work by numerous internal partners, including:

- **The Shared Service Center DJI (SSC DJI):** provides support to institutions in the areas of finance, procurement, personnel management and advice.
- **The Shared Service Center ICT (SSC-I):** takes care of development and management of applications, infrastructure and staff workstations.
- **The Training Institute (OI DJI):** specialized training and knowledge institute in the area of detention. With educational programmes this institute contributes to the expertise of employees and chain partners.

Colophon

This is a publication from the Custodial Institutions Agency. No rights may be derived from its contents.

The individuals in the photographs are employees of DJI.

Contact details

Custodial Institutions Agency
Corporate Communication Department
P.O. Box 30132, 2500 GC The Hague
To request further information and the corporate film *This is DJI* visit www.dji.nl

To respond or submit orders
communicatie@dji.minjus.nl
© DJI The Hague, August 2020

All facts and figures quoted in this brochure are based on 2019



Custodial Institutions Agency

Where freedom ends
and may be regained